

# Migration in Nebraska and Washington County

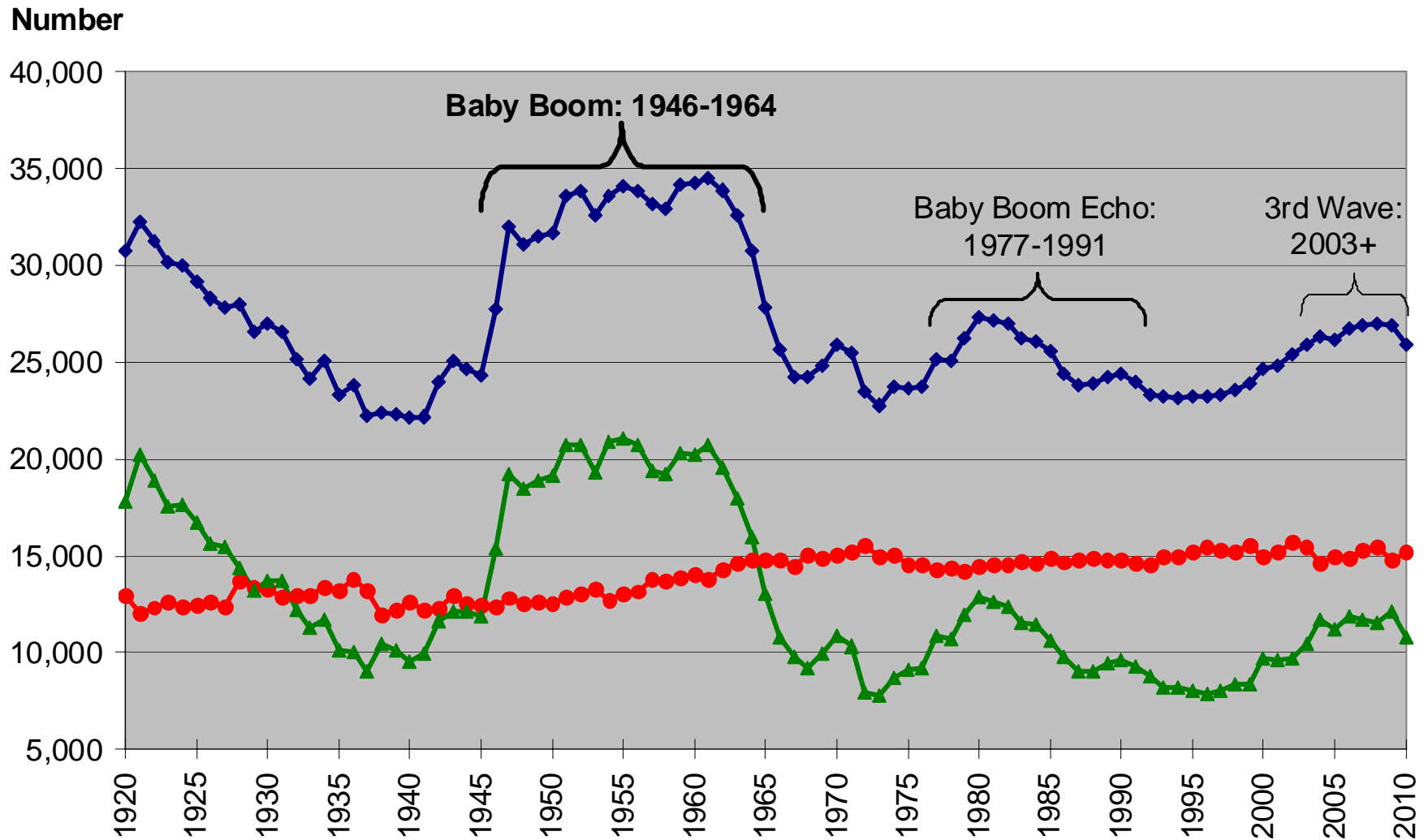
Fort Calhoun English Class  
October 18, 2011

David Drozd, M.S. – Data Specialist and Census Expert  
Center for Public Affairs Research, UNO  
402-554-2132    [ddrozd@unomaha.edu](mailto:ddrozd@unomaha.edu)  
[www.unomaha.edu/cpar](http://www.unomaha.edu/cpar)

- Washington County has had its population increase for 6 straight decades, each one after World War II (1950s and every decade since)
  - That has happened in only 9 of Nebraska's 93 counties
    - The location of being near Omaha (part of the Omaha metro area) is a helpful factor
  - Interestingly, the county had lost population in each decade from 1900 through the 1940s

- Understanding population change is easy!!
  - 2 “Components” of Population change
    - Natural Change: Births – Deaths
    - Net Migration: Inmovers – Outmovers
    - The sum of these two components equals total population change
      - Note: Migration can be split into domestic and international
- The way that Nebraska and Washington County’s population has changed is different today than in the past.

## Nebraska Births, Deaths, and Natural Change: 1920-2010

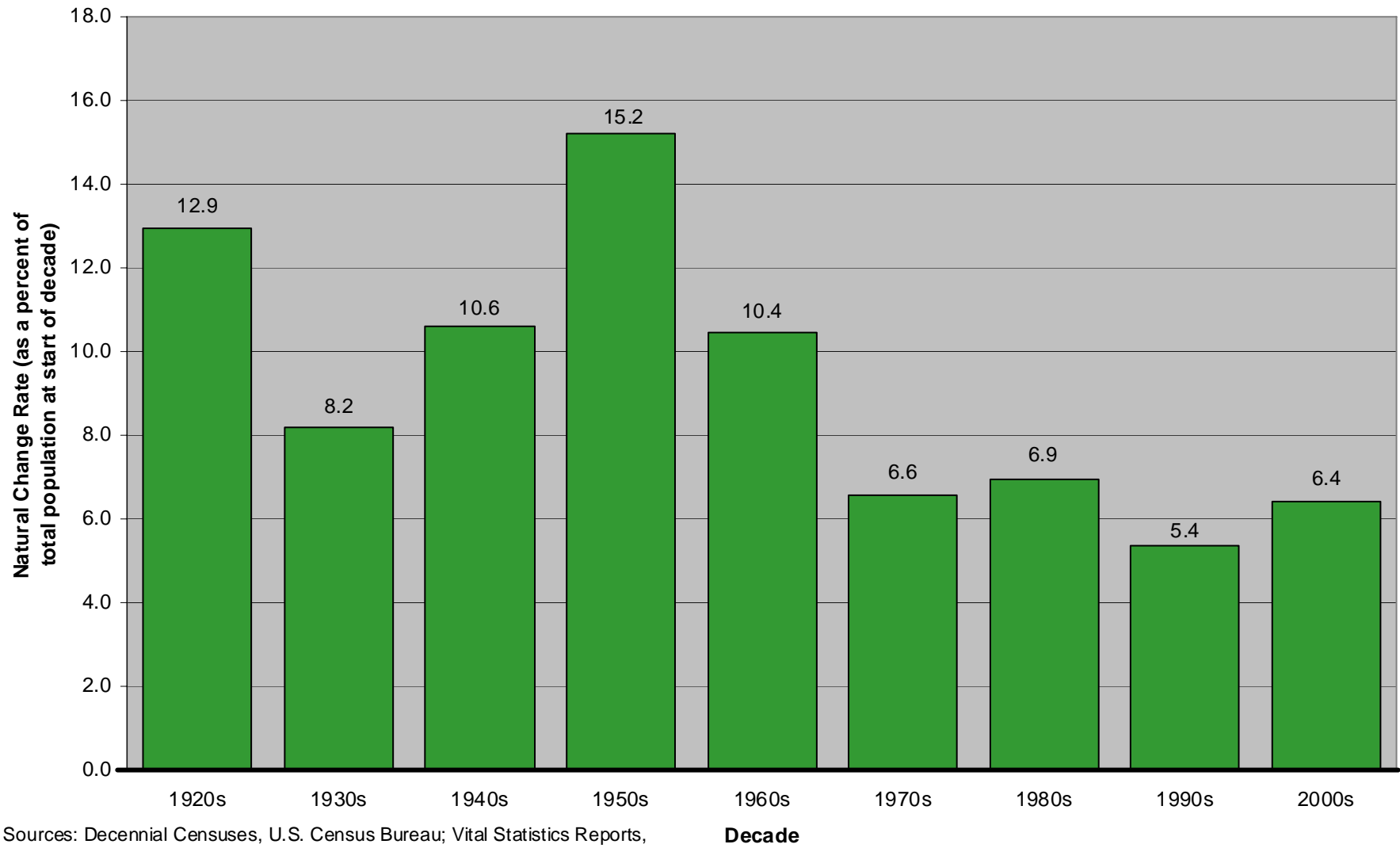


Source: Vital Statistics Reports, Nebraska  
Department of Health and Human Services

◆ Births ● Deaths ▲ Natural Change

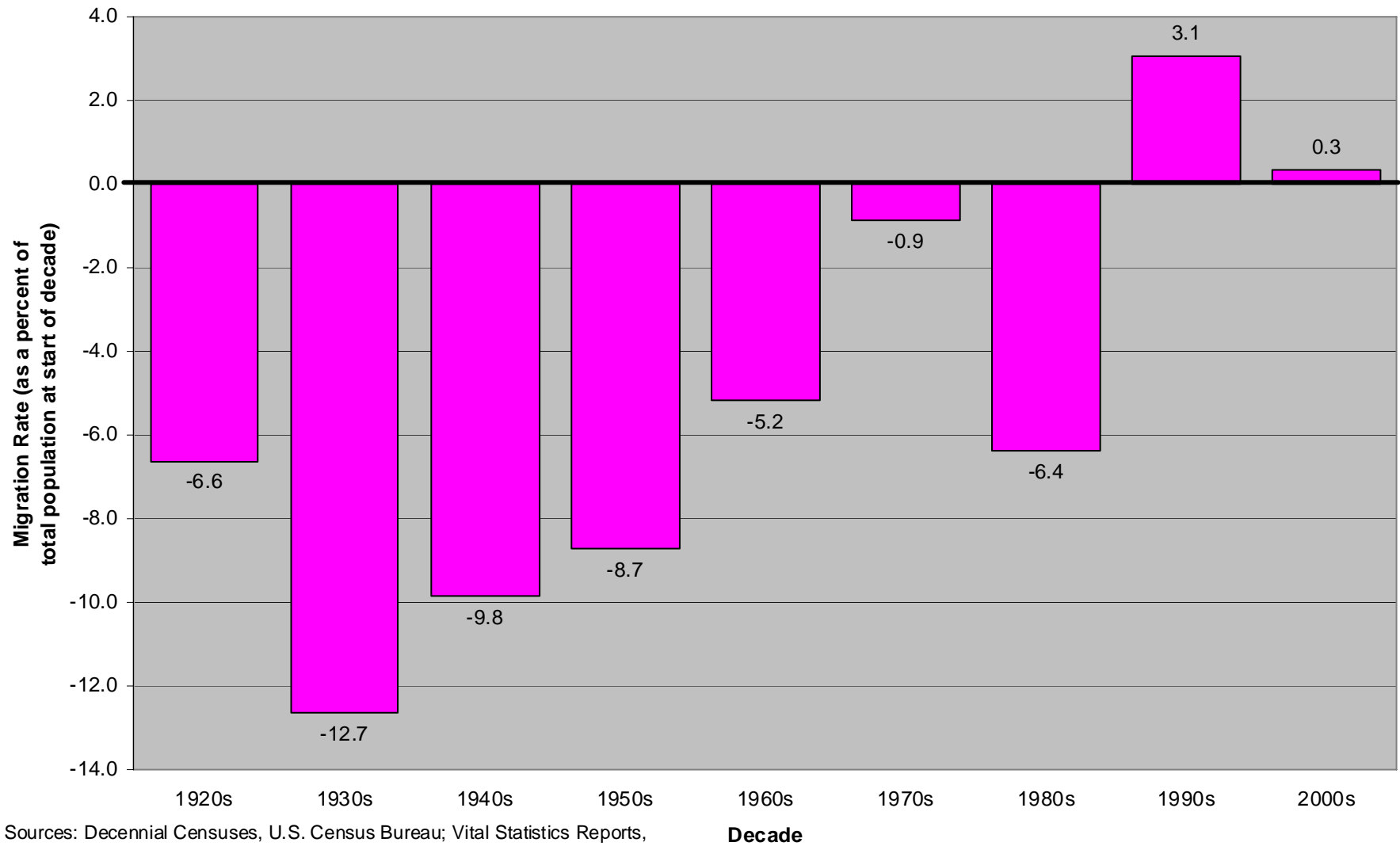
Prepared by: David  
Drozdz, CPAR @ UNO

**Nebraska Natural Change Rate by Decade: 1920s to 2000s**



Sources: Decennial Censuses, U.S. Census Bureau; Vital Statistics Reports, Nebraska Department of Health and Human Services

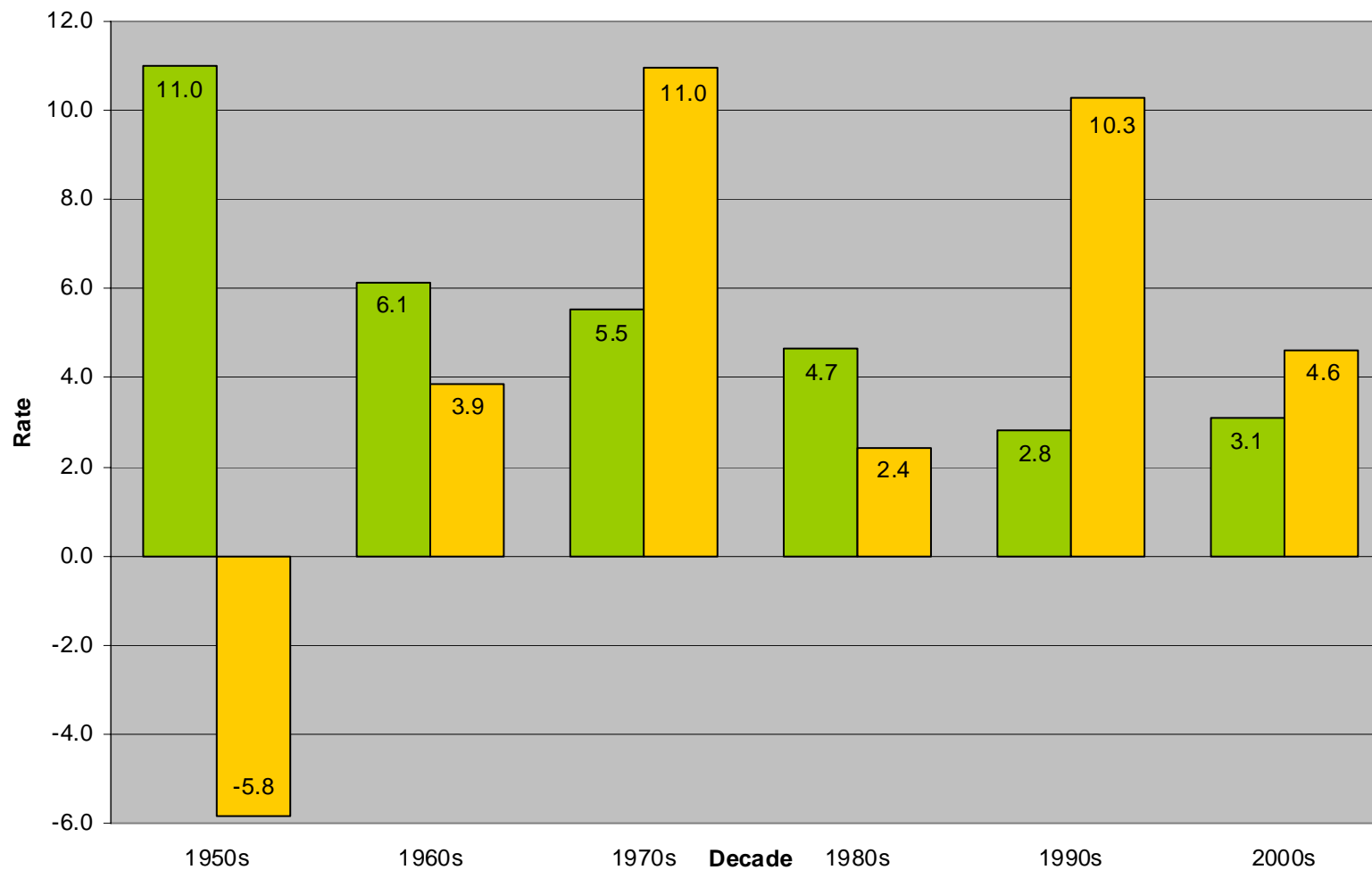
### Nebraska Net Migration Rate by Decade: 1920s to 2000s



Sources: Decennial Censuses, U.S. Census Bureau; Vital Statistics Reports, Nebraska Department of Health and Human Services

## Rate of Natural Change (Births - Deaths) & Net Migration in Washington County: 1950 to 2010

Prepared by: Center for Public Affairs Research, UNO



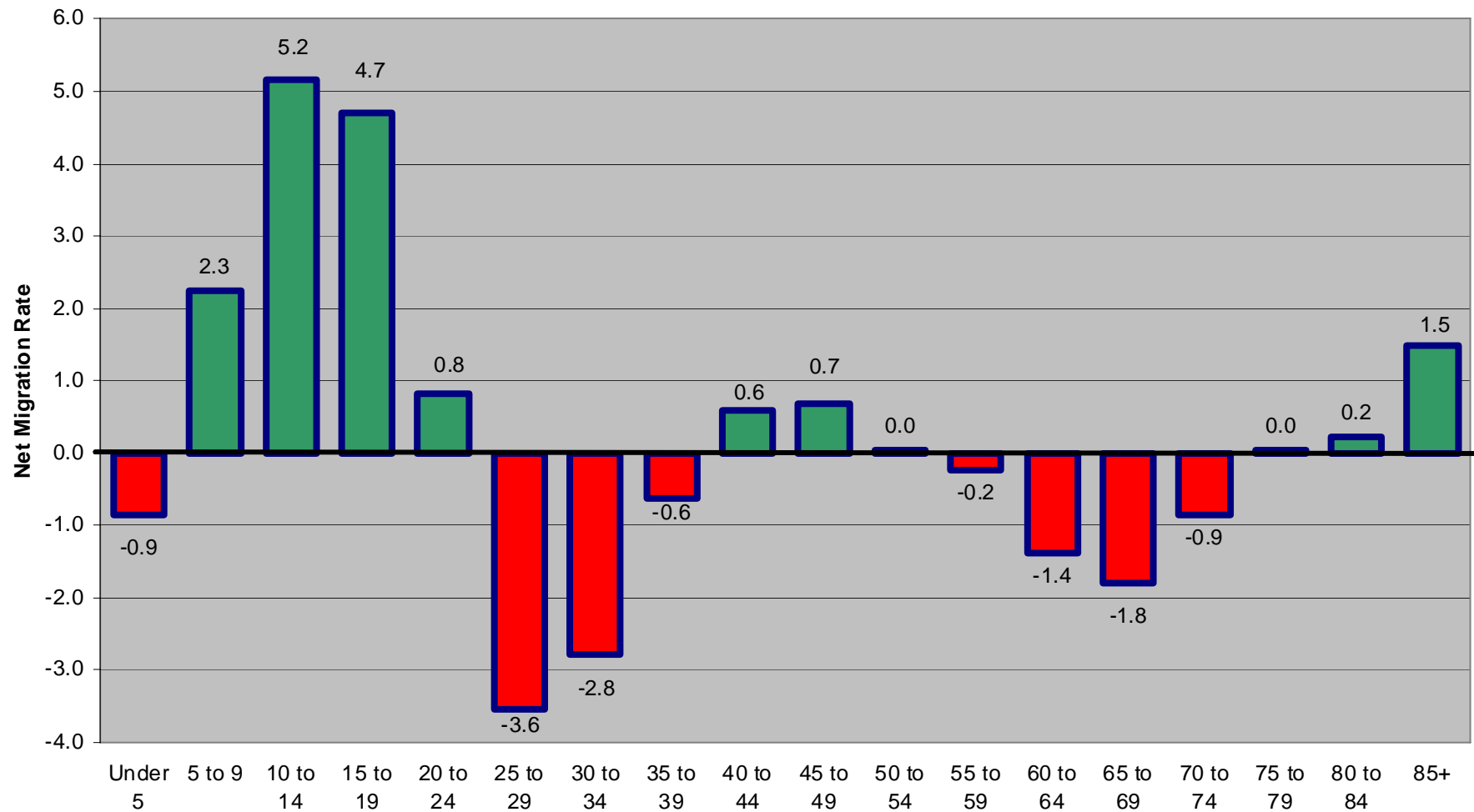
Sources: Decennial Censuses, U.S. Census Bureau; Vital Statistics Reports, NE Dept of HHS

■ Natural Change Rate ■ Net Migration Rate

Note: A positive natural change rate and positive net migration rate are typically desired from a population growth standpoint.

## Nebraska Net Migration Rate by Age during 2000 to 2010 timeframe

Overall Net Migration Rate = 0.3



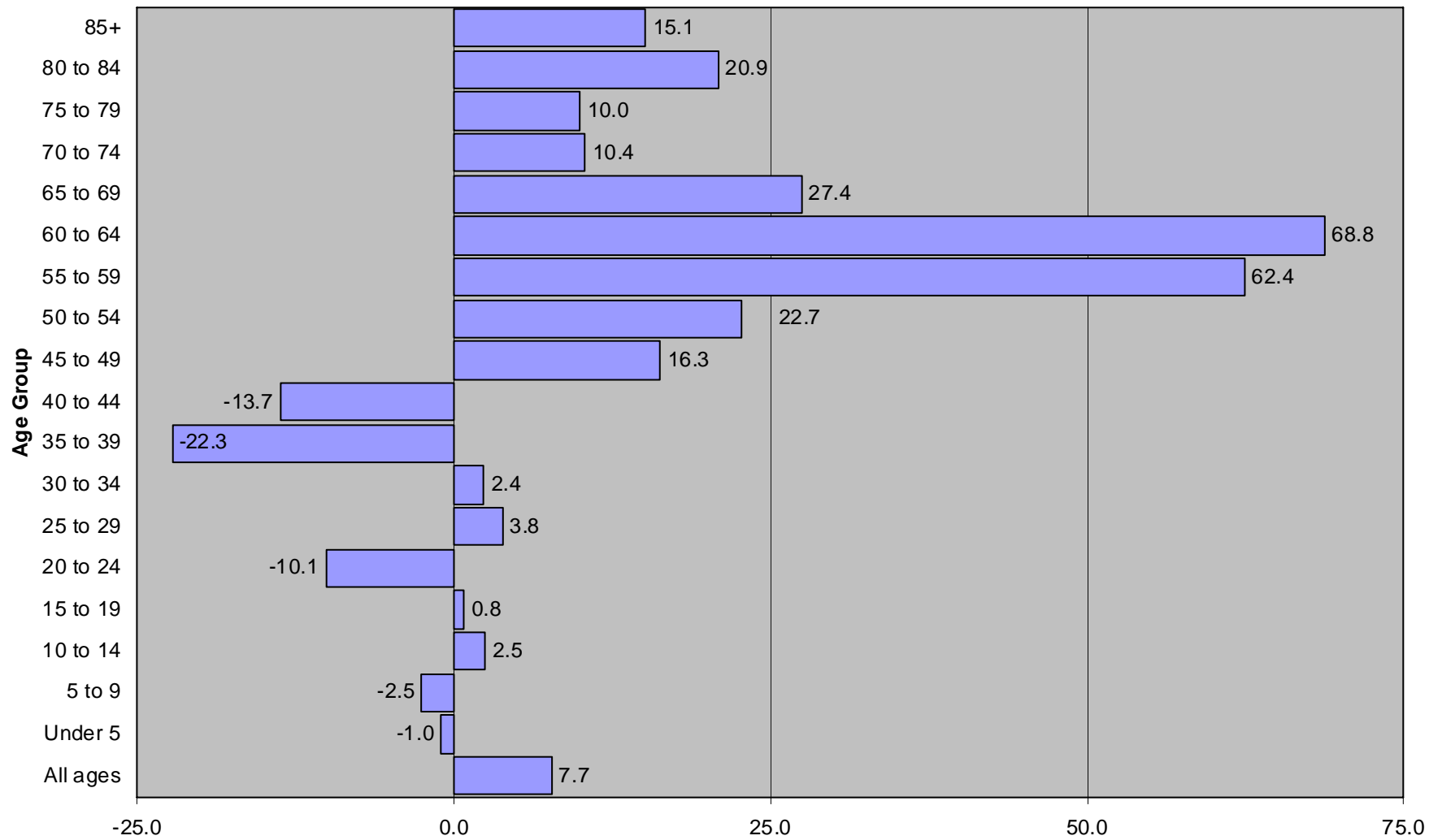
Sources: 2000 and 2010 Censuses, U.S. Census Bureau, Annual Births and Deaths by Single Year of Age, NE Dept of HHS

Age Group

Compiled and Prepared by: David Drozd,  
UNO Center for Public Affairs Research



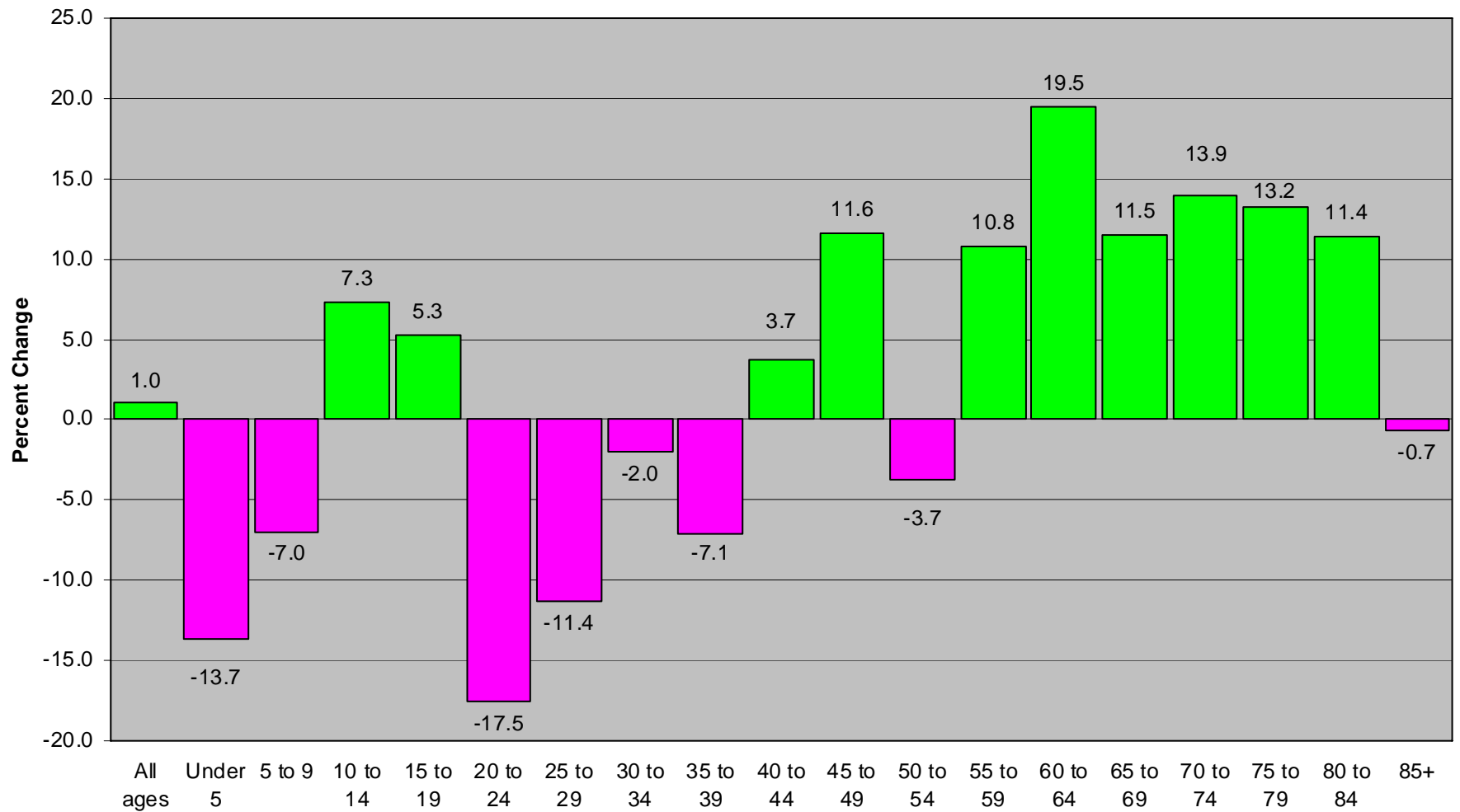
### Percentage Change in Population by 5-Year Age Group in Washington County: 2000 to 2010



Sources: 2000 and 2010 Censuses, U.S. Census Bureau

Percent Change

# **Net Difference in Percentage Change in Population by 5-Year Age Group -- Washington County vs. Nebraska: 2000 to 2010**

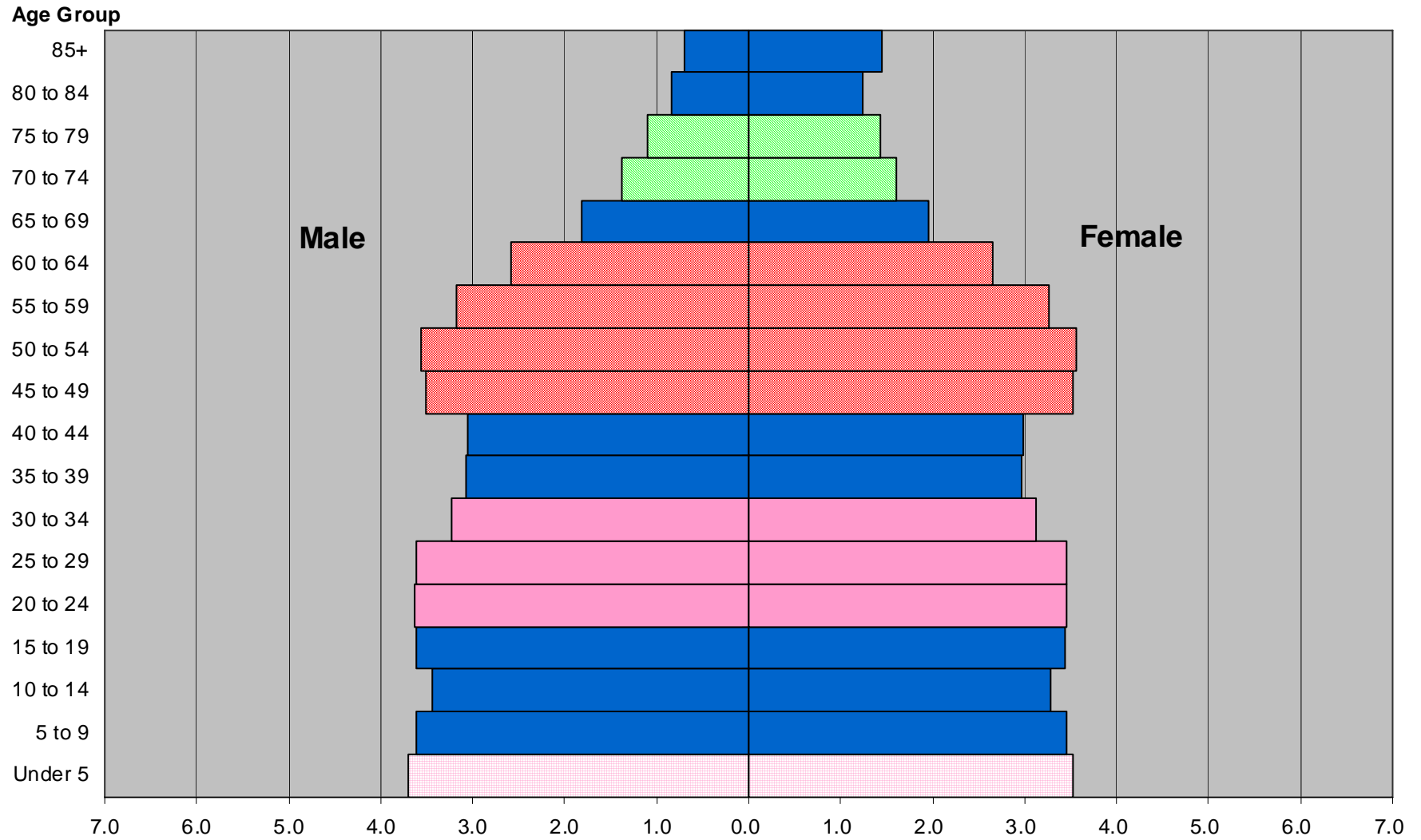


Sources: 2000 and 2010 Censuses, U.S. Census Bureau

**Age Group**

Age groups shown in green are where Washington County exceeded the Nebraska change rate.

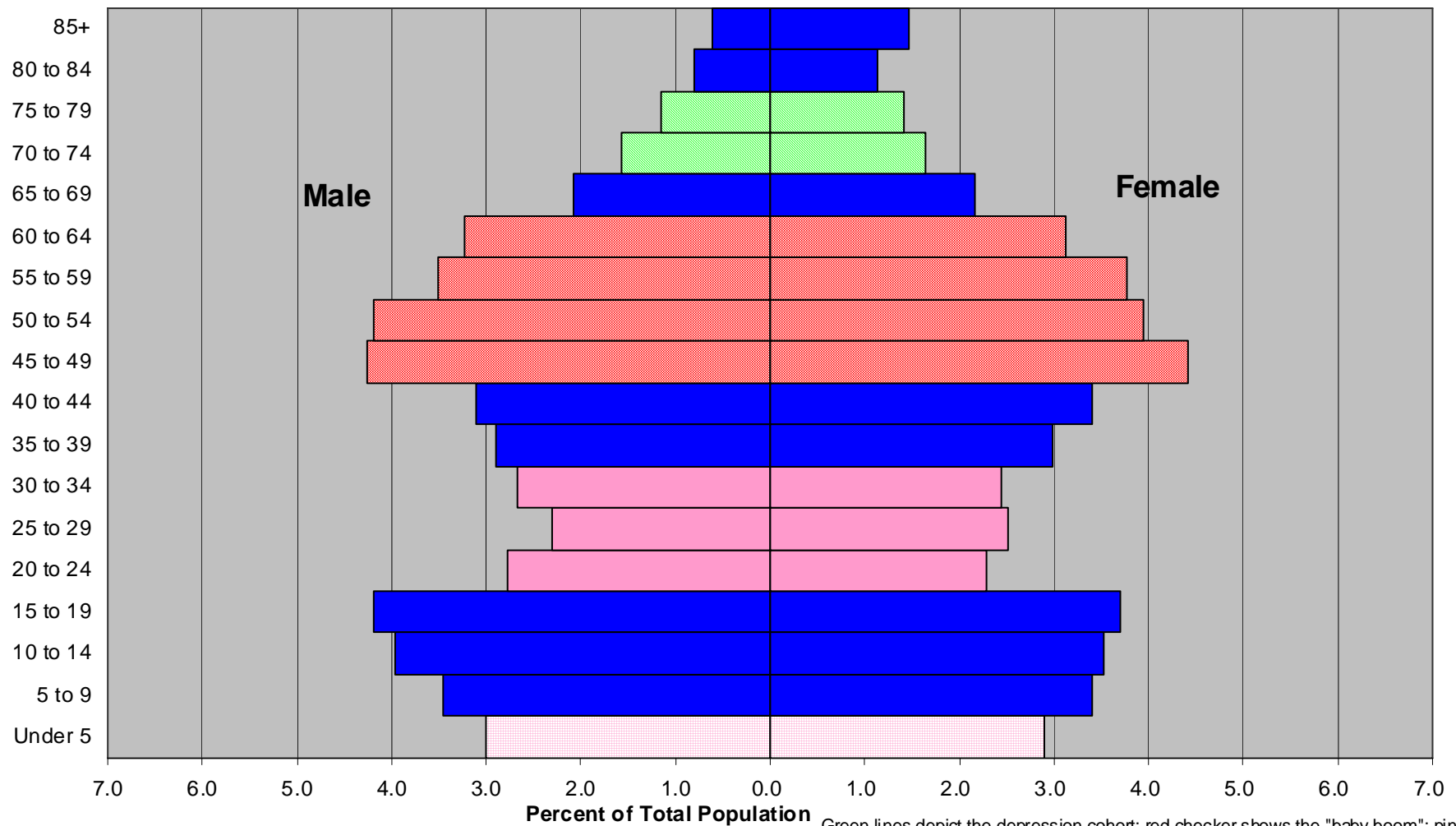
## 2010 Nebraska Population by Sex and Five-Year Age Group



Source: 2010 Census, U.S. Census Bureau

Green lines depict the depression cohort; red checker shows the "baby boom"; pink crosshatch shows the "3rd wave"

## 2010 Washington County Population by Sex and Five-Year Age Group: Total Population



Source: 2010 Census (DP-1), U.S. Census Bureau

Green lines depict the depression cohort; red checker shows the "baby boom"; pink represents the "baby boom echo"; pink crosshatch shows the "3rd wave"

- Most news reports showed Dana had about 600 students at the time it closed (7-1-10)
  - The 2010 census showed 357 or about 60% of Dana's students living in campus dorms
    - Pretty safe estimate that 400-500 students moved out of county
      - Based on census data, half likely age 18-19 and half age 20-24
      - That would equate to a decline of 15-20% of those aged 15-19 and 20-24 counted as of the April 1, 2010 census
- Some faculty & staff likely stayed in Washington County, others likely moved away

## Net Migration by Location for Washington County, NE

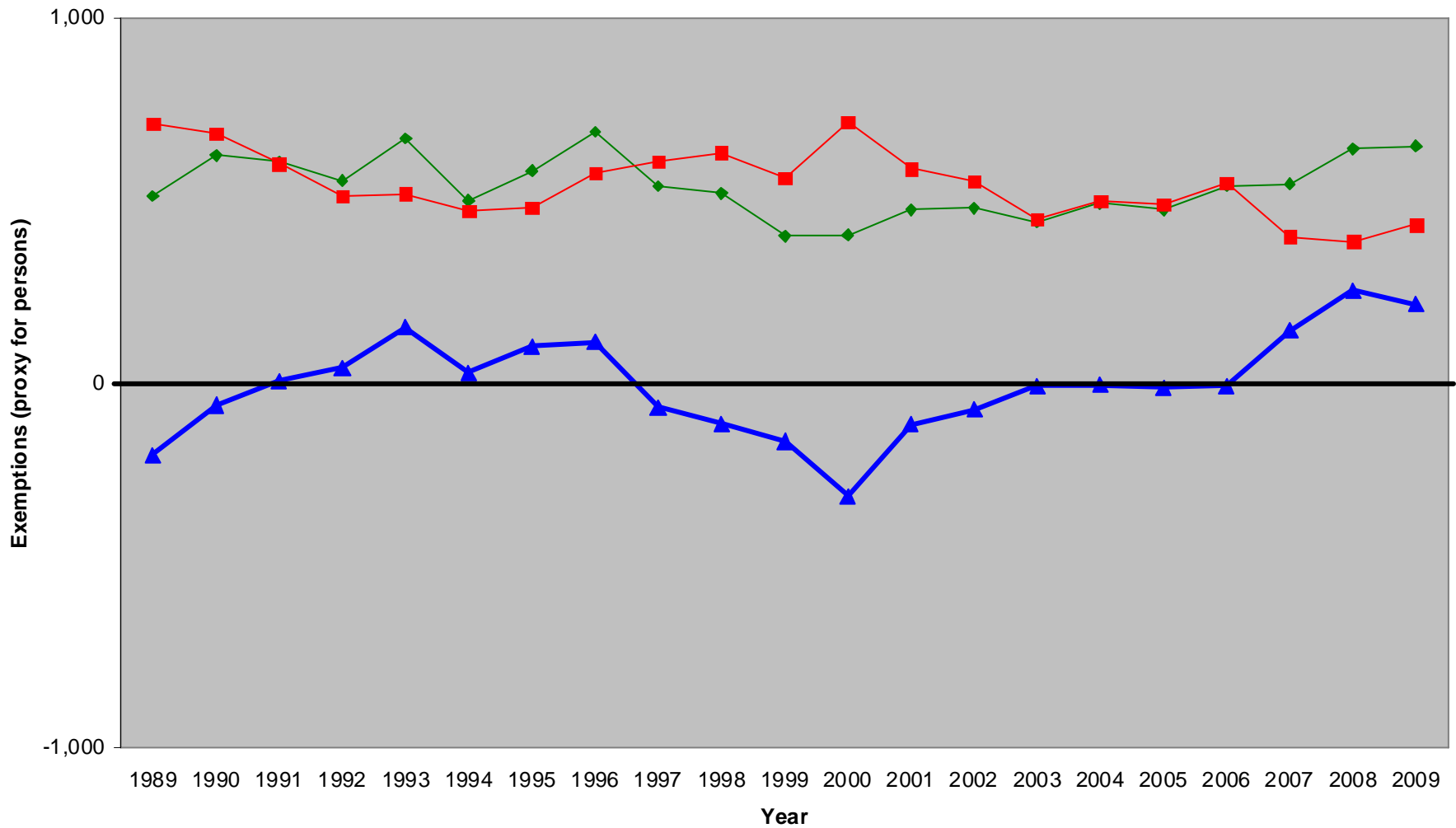


Year	Douglas County	Other NE counties	Out-of-State	Total Migration
2000	131	-7	-76	48
2001	59	138	-5	192
2002	64	45	-31	78
2003	171	57	5	233
2004	59	-70	8	-3
2005	105	4	50	159
2006	97	-22	-17	58
2007	85	-12	-6	67
2008	1	-64	-47	-110
2009	50	-17	-27	6
Totals	822	52	-146	728

Source: IRS county-to-county migration statistics,  
compiled by David Drozd

- Chicken or the egg
  - I've become a believer that people follow jobs, not jobs come to where people are
- People adapt and are price sensitive
  - Desire to commute wanes as gas prices increase
- People choose to live in places in their best interest (what's best for them/their family)
  - People are coming to Nebraska for jobs right now
  - Nebraska has typically lost people to states with a lower tax burden

### Number of Tax Return Exemptions for Movers between Nebraska and Michigan: 1989 to 2009



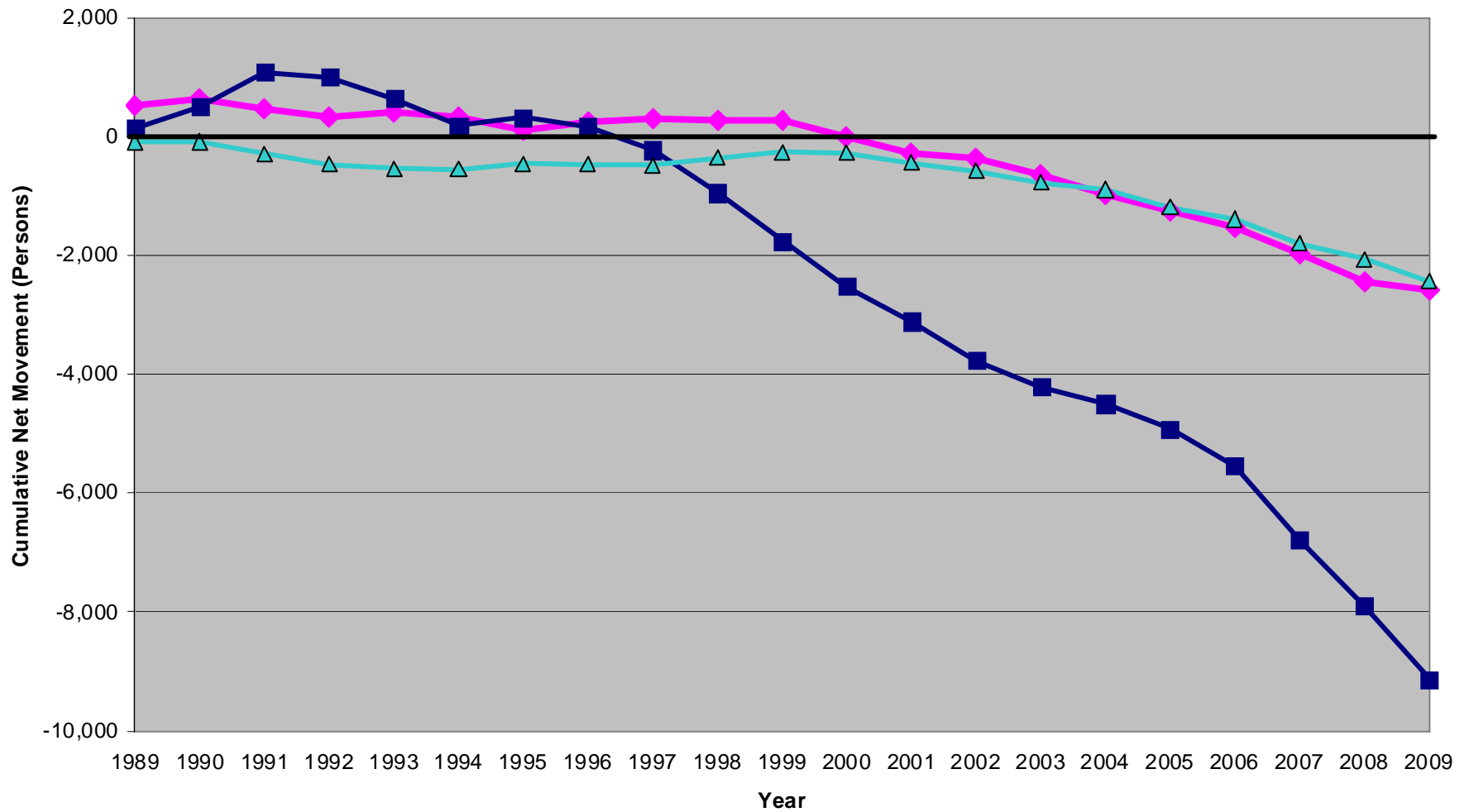
Source: IRS State-to-State  
Migration Files

◆ Total Inflow ■ Total Outflow ▲ Total Net Flow

Compiled and Prepared by: David  
Drozdz, CPAR @ UNO 7-25-11



# Cumulative Net Person Movement between Nebraska and South Dakota, Texas, and Wyoming: 1989-2009



Source: IRS State-to-State  
Migration Files

◆ South Dakota ■ Texas ▲ Wyoming

Compiled and Prepared by: David  
Drozdz, CPAR @ UNO 7-25-11

- Washington County has a relatively small 20-something population and an expanding older population
  - Impacts demand for certain products/services
    - Would you rather start a daycare or elder-care business here?
- Many residents are likely working in Omaha and spending money there (lunch, shopping)
  - Need to focus on local jobs/employer recruitment
- What will happen if baby boomers nearing retirement move out of state per the past trends?
  - Who will be here to care for the population aged 70+
- It's easier to try to keep people in the local area than to entice them to move back once they've moved away
  - What incentives/positive attributes exist for staying here?
    - One exception is that people do often return for family reasons